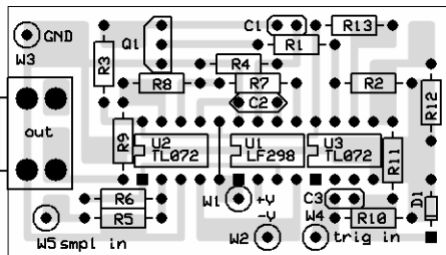
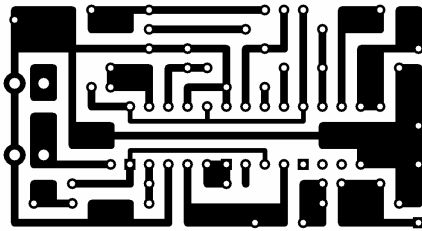


EFM LFO5A s/h mod

breadboarded/tested



C1	10n
C2	33n
C3	10n
D1	1N4148
J1	out
Q1	2N2222
R1	10k
R2	100k
R3	10k
R4	10k
R5	10k
R6	10k
R7	10k
R8	50k
R9	1k
R10	100k
R11	47k
R12	100k
R13	100k
U1	LF398
U2	TL072
U3	TL072
W1	+V
W2	-V
W3	Gnd
W4	trig in
W5	sample in

